

News from theNate

DIGITAL
Newsletter April 2026



theNate remains a winner in the 10Best Sculpture Parks competition

"Falling Meteor" by Jerry Peart, did not start with the idea of a falling meteor but as an abstract conversation of forms used in a sort of language. This language of forms is not unlike notes for a musician and words for a writer.

News from theNate



theNate250:

the art, the land, the future, theNate

The announcement of our yearlong campaign at our annual fundraiser, *Sculpture, Wine & Dine: The Prairie Party 2025*, was met with excitement, support, and a \$20,000-dollar matching grant at the end of 2025. Now, at the start of our 2026 season, this letter from our Advisory Board President, Tim Brennan creates important context for the fundraising work ahead:

Why the Nathan Manilow Sculpture Park (theNate) Matters—And Why It Deserves Our Support

In a time when so much of our daily experience is fast, digital, and transactional, places that invite us to slow down, reflect, and connect are more important than ever. The Nathan Manilow Sculpture Park is one of those rare places. It is not just a park, and not just an art collection—it is a living, evolving space where spectacular art, the prairie landscape, and our diverse community come together in ways that are both centering and transformative.

As a member of theNate Advisory Board, I have the privilege of seeing firsthand how deeply this park impacts those who visit it. Whether it's a student encountering large-scale sculpture for the first time, a family exploring the grounds on a weekend afternoon, or an artist finding inspiration in the open landscape, the experience is consistently meaningful—and often unexpected.

What makes theNate truly unique is its scale and openness. Spanning 100 acres, it is one of the largest university-based sculpture parks in the country. Visitors are not confined to galleries or walls. Instead, they engage with world-class works of art in a natural native prairie setting—walking among them, around them, and through them. This physical and emotional proximity to art changes the experience. It invites curiosity. It sparks conversation. It makes art feel less distant and more human.

Inside

- 2026 Exciting Calendar of Events
- \$250,000 yearlong campaign updates
- Thank You Illinois Arts Council

But the park's value extends far beyond aesthetics.

The park is an educational resource. As part of Governors State University, it serves students of all ages and disciplines—not only in the arts, but in environmental science, education, and other disciplines. It provides a space where learning is experiential and interdisciplinary. In a region where access to major cultural institutions can be limited, the park offers a powerful and free alternative.

It is also a community asset. The park draws visitors from across the Southland and beyond, contributing to local vitality and pride. It creates opportunities for public programming, partnerships, and cultural engagement that strengthen the region as a whole. Importantly, it does this in a way that is inclusive—welcoming people of all backgrounds and experiences.

Continued on next page.



Continued from previous page.

Sustaining a space of this scale—preserving the artwork, maintaining the landscape, expanding educational programming, and ensuring public access—requires ongoing investment. **Support for the park is not simply about funding art; it is about investing in community, education, and quality of life.**

This year, we have set a goal of raising \$250,000 to support the mission of theNate: Art, Conservation, and Education. New acquisitions, visiting artist installations, and collaborative exhibitions with the Visual Arts Gallery at GovState continue to strengthen and expand the reach of the collection. Conservation efforts—including the restoration of artworks and the stewardship of the prairie landscape—ensure that the park remains in the condition our visitors deserve. Our Education and Outreach initiatives, including the field trip program *Outdoors@theNate*, serve surrounding communities that are often described as underserved, making access to high quality arts education and lifelong learning opportunities especially meaningful.

This investment will allow the park to broaden its impact and continue growing as a destination for art lovers near and far. Achieving this fundraising goal will further position the Southland as a place where culture and creativity thrive.

The Nathan Manilow Sculpture Park is a testament to what is possible when vision, generosity, and community come together. It is a place that belongs to all of us—and one that will only continue to flourish with our collective support.

I invite you to visit, to experience it for yourself, and to consider how you might be part of its future. Places like this do not just happen. They endure because people choose to invest in them. And that is a choice worth making.

~ Timothy Brennan,
President, theNate Advisory Board



Biology Club Blue Bird Boxes

The Governors State University Biology Club placed six nest boxes within the prairie landscape of theNate, within the *Butterfly Ranch* prairie restoration project. The students of the club met with park staff to confirm the ideal locations for the birds and for the sculpture. Eastern bluebirds prefer semi-open habitats with native plants, and the additional scattered woody features provide protection from potential predators. The *Butterfly Ranch* at theNate embodies these habitat requirements.

The boxes were placed in pairs to reduce competition for territory; the hope is that the Eastern bluebird will nest in one box, while the other will serve as a house for other birds in the area, such as Tree Swallows or House Sparrows. Look for them near “Flying Saucer” by Jean Highstein, and “Avian Station” by Bernard Williams. Another pair of nest boxes were installed on the Biology Field Station property along the tree line by the pond.

Eastern bluebirds had declined by around 90% in the 1970s and were considered endangered. They are now listed as “Least concern” by the IUCN (The International Union for Conservation of Nature), partly due to extensive nestbox programs. The GovState Biology Club, in collaboration with theNate, has now contributed to this success story by installing six nestboxes around campus.

The club is all about: Promoting research and scientific inquiry, from cells to biosystems – discover, innovate, share! Find them on Instagram @govst_bioclub.

Getting students involved in this type of field work sheds light on a community aspect of studying biology. Not only did the bluebird box project provide hands-on field work, it also gave students a chance to bring biology to another part of campus and make an impact on the biodiversity of the sculpture park. A spokesperson for the club said, “As students, we’re more concerned about fieldwork in a class setting, but this time the fieldwork benefited the campus community and contributed to something greater than ordinary classwork”.



**Governors State University's
Nathan Manilow Sculpture Park Board**

Jeff Stevenson, *Director & Curator*
Timothy Brennan
Leona Calvin
Ruth Crnkovich
Elizabeth L. Kelley
Jacqueline James Lewis
Gregg Lunceford
Andrae Marak
Patricia Mell Ragland
Ethel Nicholas
Cynthia Withers Turnquest
Paul Uzureau

Student Representatives

Nicole Chavez
Angelina "Mona" Antolin

Ex-officio

Lewis Manilow, (08/11/1927-
12/12/2017), *Founder*
Joyce Ester, *Ph.D., GovState President*
Will Davis, *Vice President, Institutional
Advancement, Marketing and
Communications, Chief Executive Officer,*
James Zumerchik, *Project Manager,
Facilities Development and Management*
Deborah James, *Ph.D.
Division of Arts and Letters Chair*
Lauren Healy, *Cultural Development Officer*
Sherri Denault, *Education and Outreach
Coordinator, theNate*

Website: [Sculpture Park](#)

General Email Address: jstevenson@govst.edu

Phone: 708.534.4021

Hours: Dawn until dusk every day

Admission: Free admission to park, some activities have fees.

© 2026 Governors State University's Nathan Manilow Sculpture Park

Please direct questions or comments to **Jeff Stevenson**, Director & Curator, Nathan Manilow Sculpture Park and Visual Arts Gallery, Governors State University.

*the***Nate**
NATHAN MANILOW SCULPTURE PARK

Director's Notes

At the heart of everything we do at theNate, in addition to presenting world-class art in unexpected ways, there are three simple goals: raising awareness, deepening engagement, and building support. Every program, visit, and conversation connects to all three.

Our Chicagoland neighbors are discovering theNate, and if you're already a fan, you can help by spreading the word. Tell a friend, share our posts on social media, and let schools in your community know about the field trips other students are enjoying here. As a free public resource, word of mouth makes a huge difference for us.

Engaging with theNate can be as simple—or as meaningful—as you like. Many of our programs are free or low cost, but engagement might also mean a quiet walk around the lake, a bit of walking meditation, photography, a picnic, or time with friends. In every season, there's something here for you: from community programs to cross-country skiing, dog walks, or just clearing your head in nature.

While admission and parking are free, caring for the collection and the surrounding prairielands takes real resources. We ask those who are able to contribute in a way that's right for them. Because of generous supporters, everyone can enjoy theNate—regardless of ability to give. Every gift matters, and every gift makes an impact.

There's nothing quite like visiting in person, especially when the prairie is in full bloom. Seeing the monumental works up close is inspiring, and that experience is often what motivates our friends and followers to share theNate with others.

Unlike large institutions with big marketing budgets, **we rely on our community—you—to help amplify our mission.** We proudly serve the underserved communities around us, create equitable access to art and nature, protect and restore our precious prairielands, and support the artists whose work inspires us all.

This is an outdoor museum, so bring the kids and let them be kids—no shushing required. Dogs are welcome too; just keep them leashed and help us protect the wildlife. Whether you come alone or with others, we hope you'll make theNate part of your life.

Thank you for being part of this community. I hope this newsletter inspires you to visit, to share our story, and to consider supporting theNate with a gift.

With warm regards,

Jeff Stevenson
Director & Curator, theNate

[Donate Online](#) or checks made payable to: **NMSP/GSU Foundation**

Mailed to: Jeff Stevenson
theNate at Governors State University
1 University Parkway
University Park, IL 60484

You can also stay up to date with new developments by following us on our website and social media:

[NMSP Sculpture Park](#) • [Instagram](#) • [Facebook](#)

The Convenience of Monthly Giving

Don't forget that you can make a monthly recurring gift online. Monthly giving is a philanthropic approach where donors commit to contributing a set amount of money to theNate on a regular, automatic basis. This method provides theNate with a stable, predictable revenue stream allowing you to make a more significant impact through smaller, manageable installments.

Follow this link: [DONATIONS](#)

Click on your desired fund, and then at the bottom of the form you will **check the highlighted box to make your gift a re-occurring monthly gift**, this way you can budget your gift to theNate over 12 months and never have to think about it again!

Lauren Esolato Healy
Email: lesolato@govst.edu
Cultural Development Officer

O: 708.534.8390

C: 708.601.4310

Increase Your Impact

Please contact me to discuss Planned Giving
 I work for a matching gift company/organization

Credit Card Information

Make this a recurring payment:

Amount Due \$0.00

Card

Secure, fast checkout with link

Card number:
1234 1234 1234 1234

Expiration date: MM / YY Security code: CVC

Country: United States ZIP code: 12345

US bank account

SUBMIT



Lauren (far right) poses with the art program faculty and friends at our annual fundraising event.

Welcome In: Navigate, Discover, and Explore theNate



We are excited to enhance the visitor experience with a new sign at the F Entrance to GovState—a location we almost always use as our gathering point for events. This spot makes perfect sense: it's near Illinois Landscape, No. 5 by John Henry, affectionately known as **"French Fries,"** a landmark that's hard to miss. Convenient restrooms are just inside the entrance, and the wonders of **theNate** await only a few steps away. The Visual Arts Gallery and Art on Campus displays are also close by.

The new sign features QR codes that provide access to the **FREE OtoCast App**, offering a GPS-enabled guide to the collection, as well as a simple way to make donations to theNate. With this sign, visitors can easily get oriented, plan their route, and begin exploring all that theNate has to offer.

2026 Calendar of Events

We're delighted to share a preview of our **2026 season of programs and events**. While a few offerings later in the year are still being finalized and fine-tuned, we encourage you to **save these dates** so you won't miss what's ahead.

From guided tours and family programs at **theNate** to special off site events in **Bridgeport** and **Olympia Fields**, this season is filled with opportunities to explore, learn, and connect. Join us throughout the year as we come together to **experience art, share ideas, and celebrate the Nathan Manilow Sculpture Park**.

SATURDAY, APRIL 25 INTERNATIONAL SCULPTURE DAY

To celebrate **International Sculpture Day**—the grand finale of **Earth Week at GovState**—we invite visitors to explore the park through a self-guided tour powered by OtoCast.

OtoCast is a **FREE smartphone app**, available in your app store, that delivers a **real-time, GPS-guided experience** as you move through the sculpture park. Widely used across the country for sculpture parks and cultural destinations, OtoCast allows visitors to engage with artworks and points of interest at their own pace while learning more about each piece along the way.

Simply download the app, bring your phone, and enjoy an immersive way to experience the park. Paper maps are also available at the information desk at GovState's D-Main Entrance.



No registration necessary – take lots of pictures and tag us in your posts @thenate.gsu (Facebook) and @_thenate_ (Instagram) – we'd love to see your shots.

PRO TIP: bring a picnic lunch and sit at Dan Peterman's "Running Table" the 100-foot-long picnic table made from recycled plastics, perfect theme for the day.

PRO TIP 2: a group of Top Fans plan to gather and walk together - all are welcome - post a comment here if you would like to join us and we'll designate specifics closer to the day.

SUMMER SOLSTICE TOUR

Saturday, June 20 at 7 p.m.
(Sunset at 8:28 P.M.)

Celebrate the longest day of the year with a **guided Summer Solstice tour** led by **Jeff Stevenson**, Director and Curator of the Nathan Manilow Sculpture Park. This evening walk will focus on the **North Collection**, highlighting classic favorites, visiting artists' installations, and a special moment as the sun sets through the wings of **Phoenix**.

Stroll through the prairie landscape as daylight lingers, taking in the natural beauty of the season and the park's masterworks. Along the way, Jeff will share the history and vision of the sculpture park, while **volunteers and student docents** offer insights into their favorite pieces.

Join us for a relaxed, reflective evening that brings together art, landscape, and the passing of light at theNate.

Meet at the F Entrance to GovState, located on the East Side of campus, near the GIANT yellow sculpture (Illinois Landscape, No. 5 by John Henry, AKA French Fries)

Parking is free, Lot East 3 is closest to the F Entrance.

Restrooms available inside at F Entrance.

Wear shoes for walking on grass paths, dress in layers for the weather, bring other comfort items such as bug spray, water bottles, etc. The typical length of a tour is about a mile to a mile and a half - we customize depending on the group, weather, and ground conditions.

Continued on next page.

SUMMER SOLSTICE TOUR

Continued from previous page.

PRO TIP: come early and bring a picnic dinner to sit at Dan Peterman's "Running Table" – the 100-foot-long picnic table sculpture made of recycled plastics. (Located next to "French Fries" and near F Entrance meeting location).

Fee \$10

[Registration for Summer Solstice Tour link](#)

Rain or Shine

Questions? Contact jstevenson@govst.edu



FAMILY FUN NIGHT: A WALK PLUS MAKE & TAKE PROJECTS AT THENATE

Thursday, June 25, 6 p.m. at 7:30 p.m.

Fee \$15 – includes materials for hands-on project for all ages.

[Registration for Family Fun Night link](#)

Join us for a fun activity for the whole family!

PRO TIP: come early and bring a picnic dinner to sit at Dan Peterman's "Running Table" – the 100-foot-long picnic table sculpture made of recycled plastics. (Located next to "French Fries" and near F Entrance meet-up location).

Restrooms available inside F Entrance.



Meet at the F Entrance to GovState, located on the East Side of campus, near the GIANT yellow sculpture (Illinois Landscape, No. 5 by John Henry, AKA French Fries)

Parking is free, Lot East 3 is closest to the F Entrance.

Wear shoes for walking on grass paths, dress in layers for the weather, bring other comfort items such as bug spray, water bottles, etc. The typical length of a tour is about a mile to a mile and a half; this one will be shorter to allow time for the project - we customize depending on the group, weather, and ground conditions.

Questions? Email: sdenault@govst.edu

OPEN STUDIO IN BRIDGEPORT

Saturday, July 18 from 2–4 p.m.

Karpowicz Studios
700 West 41st Street
Chicago, IL 60609

Continued on next page.



OPEN STUDIO IN BRIDGEPORT

Continued from previous page.

[Karpowicz Studios web site link](#)

Sculptor **Terry Karpowicz**—creator of Stargazing with Contrails and Art Arc—is generously opening his Bridgeport studio for a behind-the-scenes look at his creative process. Visitors will have the opportunity to explore where the work happens, from **raw materials and works in progress** to completed sculptures.

This open studio offers a rare chance to experience the artist's workspace firsthand and gain insight into how concept becomes form.

PRO TIP: Arrive early for first access to a selection of original artworks. Proceeds from sales will benefit **theNate**.

Refreshments will be served; neighborhood street parking is available.

Questions? Contact jstevenson@govst.edu



FAMILY NIGHT AT THENATE

Thursday, July 23 from 6 p.m. – 7:30 p.m.
with Education and Outreach Coordinator,
Sherri Denault

Fee \$15 – includes materials for hands-on project for all ages

[Registration for Family Night at theNate link](#)

Join us for summertime fun at theNate for the whole family! Although the walk/tour will be educational and informative, the kids can run wild and make noise without anyone shushing them - and once some energy is burned off, we'll have an engaging hands-on project for them, and you, to make-and-take.

Meet at the F Entrance to GovState, located on the East Side of campus, near the GIANT yellow sculpture (Illinois Landscape, No. 5 by John Henry, AKA French Fries)

Parking is free, Lot East 3 is closest to the F Entrance.

Restrooms available inside at F Entrance.

Wear shoes for walking on grass paths, dress in layers for the weather, bring other comfort items such as bug spray, water bottles, etc. The typical length of a tour is about a mile to a mile and a half; this one will be shorter to allow time for the project - we customize depending on the group, weather, and ground conditions.

PRO TIP: come early and bring a picnic dinner to sit at Dan Peterman's "Running Table" - the 100-foot-long picnic table sculpture made of recycled plastics. (Located next to "French Fries" and near F Entrance meeting location).

Rain or Shine

Questions? Email: sdenault@govst.edu

Continued on next page.

ROCKWELL HOUSE, OLYMPIA FIELDS

Thursday, August 6, 2026 from 6 – 8 p.m.

Join **Jeff Stevenson**, Director and Curator of the Nathan Manilow Sculpture Park, in conversation with **Liz Chilsen**, Manager of Exhibitions and Collections at the Elmhurst Art Museum, for an evening focused on the life and work of **Abbott Lawrence Pattison (1916–1999)**—a Chicago-born sculptor whose career bridged classical traditions and modern abstraction. Featuring Pattison's *Untitled* (Firenze) (c. 1960), the earliest work in the theNate collection, and a companion piece held by the Rockwell House, this discussion will explore the artist's evolving relationship to form, history, and place, and his lasting impact on postwar American sculpture.

Refreshments, tours of The Rockwell House, and conviviality will be offered. Registration will be required so watch for more about this event in the coming months.

Please join the Advisory Board for theNate and the Host Committee for this seasonal favorite experience as we celebrate the 34 masterworks in the collection, 5 visiting artists' installations, and more delightful discoveries!

theNate
NATHAN MANILOW SCULPTURE PARK



THE PRAIRIE PARTY AT THENATE SAVE THE DATE

Saturday, September 12, 2026

For sponsorship information contact:

Lauren Esolato Healy
Cultural Development Officer

Email: lesolato@govst.edu

O: 708.534.8390

C: 708.601.4310

GUIDED AUTUMN TOUR

Saturday, October 17, 2026 from 1– 2:30 p.m.

Join **Jeff Stevenson**, Director and Curator of the Nathan Manilow Sculpture Park, for a guided autumn walk through the park with a special focus on the **South Collection**. This tour highlights visiting artists' installations alongside classic favorites—works that connect us to the Earth through material, form, and place.

Experience the beauty of fall at theNate as the **Butterfly Ranch prairie restoration** comes alive with rich autumn color. Along the way, Jeff will share the history and vision of the park, while **volunteers and student docents** offer insights into some of their favorite sculptures.

Celebrate the season with a relaxed, informative stroll through the prairie landscape and among the masterworks that define theNate.

[Registration for the Guided Autumn Tour link](#)

Fee \$10

Meet at the F Entrance to GovState, located on the East Side of campus, near the GIANT yellow sculpture (Illinois Landscape, No. 5 by John Henry, AKA French Fries)

Parking is free, Lot East 3 is closest to the F Entrance.

Restrooms available inside at F Entrance.

Wear shoes for walking on grass paths, dress in layers for the weather, bring other comfort items such as bug spray, water bottles, etc. The typical length of a tour is about a mile to a mile and a half - we customize depending on the group, weather, and ground conditions.

PRO TIP: come early and bring a picnic lunch to sit at Dan Peterman's "Running Table" - the 100 foot long picnic table sculpture made of recycled plastics. (Located next to "French Fries" and near F Entrance meeting location).

Rain or Shine

Questions? Contact jstevenson@govst.edu

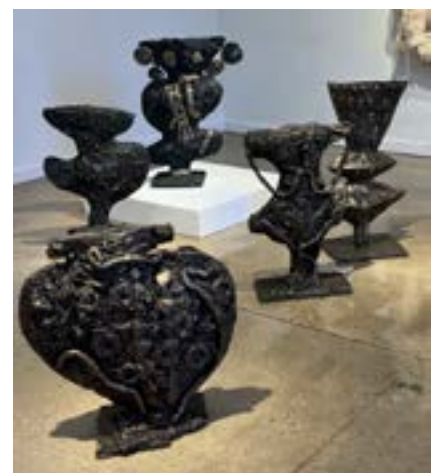


Why Visiting Artists Matter

Temporary installations play a vital role in the mission of theNate, and we currently have five on view. They activate the permanent collection, introduce new voices into the conversation, and offer visitors the thrill of discovery. Just as new works arrive, others conclude their journeys here—each chapter enriching the story of the sculpture park.

As new sculptures join the landscape and others prepare to depart, theNate continues to grow as a dynamic cultural destination. We invite you to visit often, walk among evolving installations, and experience the ever-changing dialogue between art, nature, and community.

Come experience what's new—and rediscover what's here with fresh eyes.



Education Outdoors@theNate



An outdoor sculpture park and an indoor art gallery provide a vibrant opportunity for students to engage with art and nature. Field trips offer hands-on learning that extends beyond the classroom, making education both fun and memorable.

“I keep bringing my students to theNate because it is a unique experience. This place is a treasure so close to home, so I always want my students to know how fortunate they are to have this outdoor art gallery in their backyard!”

~ Middle School Art Teacher, and Art Club Advisor

A trip to theNate and Visual Arts Gallery at GovState is more than an outing—it’s a chance to bring learning to life. Students’ education is enriched by immersing them in spaces where art, nature, and creativity meet.



Why visit the outdoor Sculpture Park and the indoor Art Gallery?

BENEFITS	DETAILS
Multi-Disciplinary Learning	Explore sculptures and gallery art that integrate art, science, and literacy.
Creative Thinking & Problem Solving	Engage in activities to think like artists.
Social-Emotional Learning	Build empathy, confidence, and communication skills through art discussions.
Outdoor & Indoor Learning	Combine outdoor sculpture exploration with indoor gallery reflection.
Cultural & Community Connection	Contemplate diverse stories through artworks, fostering cultural awareness and classroom bonds.

- Age-appropriate tours, interactive workshops, and exploration.
- STEAM – Programs meet art, science, and social studies standards.
- Accessible to all students with resources to help plan your visit.

Outdoors@theNATE is a unique, outdoors, hands-on, customizable program. Our tours are thorough and age appropriate. We can accommodate school groups from Grades 4 to 12. Tours may be designed to a variety of timeframes and abilities – please contact park staff to discuss your particular needs.

Outdoors@theNATE is an interactive program designed to build awareness of visual thinking, address elements of the Common Core Curriculum, help satisfy aspects of the ISBE Standards and Goals for 4th and 5th grade, present artworks as part of S.T.E.A.M. (Science, Technology, Engineering, ARTS, and Math) principles.

The fee for Outdoors@theNATE is \$10 per student and \$5 per adult teacher or chaperone. This fee includes theNate-book and all materials. It does NOT include lunch or transportation.

Book your field trip today and inspire your students through art, both outdoors and in the gallery! Outdoors@theNATE is offered by appointment so contact Sherri to schedule your class visit:



Education and Outreach Coordinator:

Sherri Denault
sdenault@govst.edu

708.534.4021

Outdoors@theNate School Tour Access Grant!



We're excited to announce that theNate has received a \$25,000 grant to support Educational Outreach from Earthrise Energy!

Thanks to this funding, we're launching a School Tour Access Grant to help more students experience the intersection of art, nature, and learning.

We're offering eight (8) schools the opportunity to:

- Receive full reimbursement for bus transportation
- Participate in a fully subsidized educational tour program at theNate
- Bring up to 50 students per school

PROGRAM DETAILS:

- Tour Days: Tuesdays and Wednesdays only
- Eligible Months: April 2026 and October 2026
- Maximum Group Size: 50 students
- 4 schools in spring (April 2026)
- 4 schools in fall (October 2026)
- Access is on a first come first serve basis

Let's make this a memorable year for your students!



APPLY HERE FOR GRANT APPLICATION



[OR CLICK HERE FOR GRANT APPLICATION](#)



www.thenate.org

Conservation

Preserving the Legacy: Caring for Art, Land, and Experience at theNate

Every sculpture at theNate tells a story—not only through form and material, but through its ability to endure. Conservation is central to our mission because the works rising from the prairie are not static objects; they are living presences, constantly shaped by weather, landscape, and time. Their continued strength, safety, and beauty require sustained, expert care.

Painted steel, concrete, wood, bronze, and stone all respond differently to sun, wind, rain, snow, and seasonal extremes. Conservation at theNate is not routine maintenance—it is **stewardship**. Each treatment is guided by the artist's original intent and carried out to the highest professional standards, ensuring that these works remain faithful to their vision while standing strong for future generations.

As a **free public resource**, theNate welcomes thousands of schoolchildren, families, university students, and visitors from around the world every year. Conservation is what allows these audiences to safely experience monumental sculpture in dialogue with nature—to learn, reflect, and find inspiration in a setting unlike any other. Every cleaned surface, stabilized foundation, and restored finish protects not only an artwork, but the educational and cultural experiences it makes possible.

Our Year Long Conservation Goal

This year, we embarked on a **year long fundraising effort to support conservation, education, and landscape stewardship**, and thanks to the generosity of our community, we are **nearly halfway there**. This progress is meaningful, but the work ahead remains substantial. Conservation is our single largest annual investment—and the foundation on which everything we do depends.

What Conservation Really Costs

Rather than a single project, conservation at theNate is a constellation of ongoing commitments. Together, these efforts ensure that the park remains exceptional, accessible, and safe.

Major Sculpture Conservation

\$150,000 – *Mary Miss, Field Rotation*
Structural repairs, walkway replacement, and full

surface treatment

- **\$70,000** – Martin Puryear, *Bodark Arc*
Drainage correction, path reconstruction, boardwalk and landscape restoration
- **\$45,000** – Christine Tarkowski, *Working on the Failed Utopia*
Full disassembly, transport, restoration, reinstallation, and site work
- **\$14,600** – Bruce Nauman, *House Divided*
Concrete conservation
Thank you to Cairy and Tom Brown for supporting this initiative.
- **\$8,000** – Dan Yarbrough, *Sisyphus Aviary*
Painting, gravel base, landscape stabilization
- **\$5,000** – Richard Rezac, *Frame*
Protective coping and flashing
- **\$5,000 (every 2–3 years)** – Bronze sculpture maintenance (4 works)

Living Landscape Stewardship

- **\$8,000–\$10,000 annually** – **Butterfly Ranch Prairie Restoration**
Invasive species mitigation, seasonal mowing, and prescribed burns

Education & Public Engagement

- **\$30,000 annually** – **Education and Outreach**
School programs, docent training, and Outdoors @ theNate

Each of these figures represents expertise, materials, planning, and time. Together, they represent our promise: that the art, landscape, and learning experiences at theNate remain free, vibrant, and fully realized.

Continued on the next page.

Continued from the previous page.

Conservation—Progress, Made Possible by You

Thanks to successful fundraising and the generosity of supporters like you, we have already completed critical conservation work and made meaningful progress toward our annual goal. Every contribution moves us closer—not just to fully funding this year's priorities, but to sustaining the excellence that earned theNate national recognition, including being named the **#1 Sculpture Park in the Country** by *USA Today Readers' Choice*.

When you support conservation at theNate, you are preserving more than sculpture. You are safeguarding artistic vision, public access, education, and the unique experience of encountering art in the prairie—today and for decades to come.

Thank you for being part of this essential work.

Thank
you



*the***Nate**
NATHAN MANILOW SCULPTURE PARK



Support theNate

- **NEW ACQUISITION FUND**

Make a contribution to be a part of selecting the next artwork in the collection – with an eye toward up-and-coming, artists of color, women, or underrepresented artists.

- **LEWIS MANILOW COMMON GROUND INITIATIVE**

Your gift will go towards outreach activities designed to address social justice through leveraging the mysteries of the collection.

- **BILL DODD MEMORIAL PRAIRIE RESTORATION FUND**

Support the “Butterfly Ranch”, a 12 acre project begun through a ComEd/Openlands grant and visionaries like you, who understand the importance of preserving natural native lands for educational purposes as well as to provide a sanctuary for our visitors to revive and refresh.

- **OUTDOORS@THENATE EDUCATION FUND**

Your gift will make our dynamic, hands-on, school visits available to more students throughout our region.

- **THENATE GENERAL FUND**

Donate with confidence that your contribution will be used where it will make the biggest impact, making sure the #1 Sculpture Park in the country remains a free public resource, open 365 days a year from dawn to dusk.

Click the link below and select theNate item you wish to activate. Securely input your credit card information and amount of your gift.

Checks made payable to: GSU Foundation / theNate
www.govst.edu/nmspdonation

*the***Nate**
NATHAN MANILOW SCULPTURE PARK

www.thenate.org

FOUNDRY COUNCIL for theNATE

The Foundry Council for theNate is a membership program for corporations, small businesses, and not-for-profits that share affinity with theNate through Art, Conservation (of the Art and Land), and Education. Through their membership, these organizations will support the activities of theNate and will be invited to share their message to other members at online summit networking events and meetings. Members will be publicly acknowledged through print, online, and social media outlets and will have member access to *Sculpture, Wine & Dine* and other events.

“I believe passionately in art, believe that it is one of our brain's organizing systems, believe that one of the evolutionary reasons that it has survived and thrived for tens of thousands of years is that it does raise our aspirations and it helps us to imagine and achieve great goals.”

~ Lewis Manilow, *Founder of theNate*



*the***Nate**
NATHAN MANILOW SCULPTURE PARK

CONTACT:

Jeff Stevenson, *Director and Curator*
jstevenson@govst.edu

Advantages of Membership:

- **Visibility** – publicly acknowledged through print, online, and social media outlets
- **Collaboration** – share message at online summit networking events and meetings
- **Exclusive Access** – annual favorite “Sculpture, Wine & Dine”, and other events
- **Civic Engagement**
- **Relevant discussions with corporate c-suite level members:**
 - Land Conservation
 - Equity, Access, and Social Justice
 - Education
 - Art, Creativity

Regional Economic Development

- **Annual Membership Rates:**
- **Corporate:** \$5,000
- **Small Business:** \$2,500
- **Non-Profit:** \$1,000

Lauren Healy, *Cultural Development Officer*
lesolato@govst.edu
708.534.8390

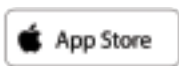


Find what you are looking for at theNate with the free app



The free Otocast app is a valuable resource for visitors to enhance your experience at your sculpture park right on your own phone! Explore the park with the voices of multiple renowned sculptors leading the way. Look for it in your app store on your phone and use it at destination attractions all over the world.

FIND IT IN YOUR APP STORE:



Apple app store web site for Otocast: <https://apps.apple.com/us/app/otocast/id880987065>

Google Play store web site for Ottocast: <https://bit.ly/4tpqXP1>



Sign up for our newsletter and have this and other important announcements delivered to your inbox:

Go to: www.thenate.org

Find the “Want more Info” form

Fill in your information with “newsletter” in the comment box.

A heartfelt thank you to the Illinois Arts Council for once again placing its trust and confidence in theNate. We are thrilled to share that we have received a **\$10,000 Illinois Arts Council General Operating Support Grant**, which will help sustain our work in art, education, and the conservation of both land and sculpture.

Through programs such as **Outdoors @ theNate**, students and visitors experience the magic of monumental masterworks set within a thriving prairie landscape. By remaining a **free and open public resource**, theNate continues to serve as a welcoming, rejuvenating destination for communities across Illinois and beyond.

We are deeply grateful to the Illinois Arts Council for its ongoing commitment to supporting the arts throughout our great state—and for helping ensure that places like theNate remain accessible, vibrant, and inspiring for all.





*the*Nate

NATHAN MANILOW SCULPTURE PARK

www.thenate.org

theNate at Governors State University

1 University Parkway, University Park, IL 60484